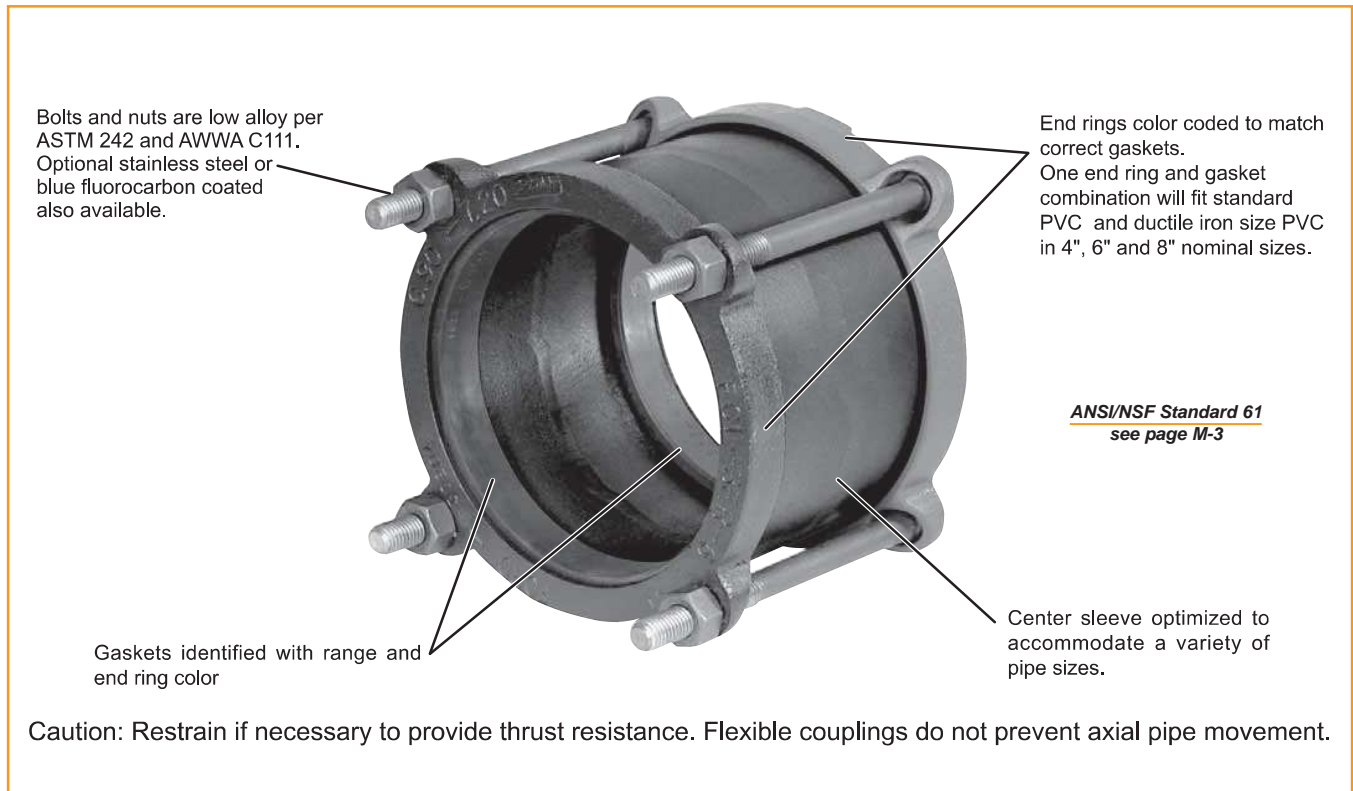


Information

Features of Ford Cast Couplings

Ford Cast Couplings offer an easy and economical way of joining pipe whether the pipe is of the same nominal size and type or different at each coupling end. Ford FC1 and FC2A Couplings offer the following quality features:

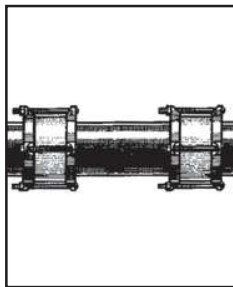


Specifications:

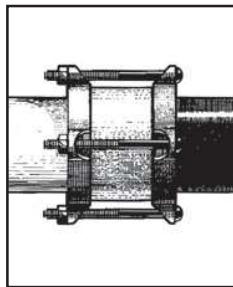
Ford Bolted Flex Couplings as listed in Catalog Section M are manufactured in accordance with the design, testing and performance standards of AWWA C219.

- 1. Center Sleeve -** Cast from Ductile Iron per ASTM A536 65-45-12.
- 2. End Rings -** Cast from Ductile Iron per ASTM A536 65-45-12. End rings are color coded for easy identification.
- 3. Gaskets -** SBR rubber per ASTM D2000. Gaskets have size and end ring color code embossed for easy identification. Optional armored gaskets are available on Style FC1 and Style FC2A in 4" thru 12" nominal pipe sizes. Optional NBR (Buna-N) or EPDM gaskets are available.
- 4. Bolts and Heavy Hex Nuts -** High strength low alloy per ASTM A242 and AWWA C111. Optional blue fluorocarbon coating available. Optional stainless steel also available.
- 5. Finish -** Shop coat. Optional epoxy coating is available.

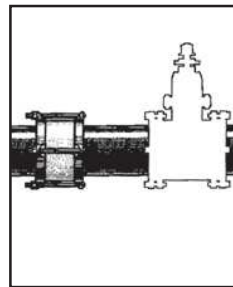
Typical Uses for Ford Cast Couplings



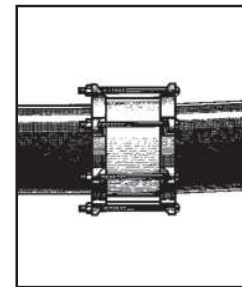
To repair split pipe



To couple different types of pipe



To install (cut-in) hydrants and valves



To connect misaligned pipe



ANSI/NSF Standard 61
see page M-3

Ford Couplings

Style FC1

Style FC1 for Cast,
Ductile Iron or PVC Pipe

Suggested uses for Ford FC1 Couplings include water main repair, joining of plain end pipe, valve and hydrant installation, and flexible joint installation at critical areas of water main stress.

The FC1 Couplings are constructed entirely of ductile iron components permitting a strong, durable connection.

Only the FC1 offers one gasket and end ring that fits all PVC and ductile iron pipe in the most popular sizes: 4", 6", and 8". Gasket ranges are embossed on each gasket for easy identification. End rings are color coded to match the color embossed on each gasket.

NOM. PIPE SIZE	CATALOG NUMBER PREFIX	GASKET RANGE		END RING COLOR CODE	BY	GASKET RANGE		END RING COLOR CODE	CENTER SLEEVE LENGTH	NUMBER OF BOLTS	APPROX. WEIGHT LBS
		1ST. HALF CAT. No.	2ND HALF CAT. No.			1ST. HALF CAT. No.	2ND HALF CAT. No.				
2"	FC1-	2.34 — 2.63	2.63	Red	X	2.34 — 2.63	2.63	Red	4"	2	6
2 1/2"	FC1-	See 2" FC2A on page M-7									
4"	FC1-	4.00 — 4.00	4.00	Red	X	4.00 — 4.00	4.00	Red	5"	3	14
		4.50 — 4.80	4.80	Red		4.50 — 4.80	4.80	Red			
		4.80 — 5.10	5.10	Black		4.80 — 5.10	5.10	Black			
6"	FC1-	6.00 — 6.00	6.00	Red	X	6.00 — 6.00	6.00	Red	5"	4	20
		6.30 — 6.30	6.30	Red		6.30 — 6.30	6.30	Red			
		6.63 — 6.90	6.90	Red		6.63 — 6.90	6.90	Red			
		6.90 — 7.20	7.20	Black		6.90 — 7.20	7.20	Black			
8"	FC1-	8.00 — 8.00	8.00	Red	X	8.00 — 8.00	8.00	Red	5"	5	29
		8.16 — 8.40	8.40	Red		8.16 — 8.40	8.40	Red			
		8.63 — 9.05	9.05	Red		8.63 — 9.05	9.05	Red			
		9.05 — 9.40	9.40	Black		9.05 — 9.40	9.40	Black			
10"	FC1-	10.20 — 10.50	10.50	Red	X	10.20 — 10.50	10.50	Red	6"	6	41.5
		10.75 — 10.75	10.75	Red		10.75 — 10.75	10.75	Red			
		11.10 — 11.46	11.46	Black		11.10 — 11.46	11.46	Black			
12"	FC1-	12.24 — 12.50	12.50	Red	X	12.24 — 12.50	12.50	Red	6"	7	54.5
		12.75 — 12.75	12.75	Red		12.75 — 12.75	12.75	Red			
		13.20 — 13.56	13.56	Black		13.20 — 13.56	13.56	Black			

To Order: Locate the gasket range that accommodates your pipe O.D. for both pipe ends. Use the top range of each gasket size to determine the part number. For example, to connect pipe with an O.D. of 6.63 to a pipe with an O.D. of 7.10, the catalog number is FC1-690-720.

Options: **SH** Standard coated coupling with Type 304 stainless steel nuts and bolts. Add "-SH" to the catalog number.
ESH Epoxy coated coupling with Type 304 stainless steel nuts and bolts. Add "-ESH" to the catalog number.
BBN Blue fluorocarbon coating on HSLA nuts and bolts. Add "-BBN" to catalog number.
N NBR (Buna-N) gasket, standard coated coupling and standard alloy bolts. Add "-N" to the catalog number.
EPDM EPDM gasket. Add "-EPDM" to the catalog number.
 (Contact factory for Type 316 stainless steel nuts and bolts.)

Example: FC1-690-720-ESH is an FC1 coupling with epoxy coating and stainless steel nuts and bolts.

Component Parts for Style FC1 Couplings

NOM. PIPE SIZE	GASKET CAT. No.	END RING CAT. No.	CENTER SLEEVE CAT. No.	BOLT AND NUT CAT. No.
2"	FC1G-234-263	FC1-RER-2	FC1-CS-2	FBN-58-65
	FC1G-400	FC1-RER-4		
4"	FC1G-450-480	FC1-RER-4	FC1-CS-4	FBN-58-8
	FC1G-480-510	FC1-BER-4		
6"	FC1G-600	FC1-RER-6	FC1-CS-6	FBN-58-8
	FC1G-630	FC1-RER-6		
	FC1G-663-690	FC1-RER-6		
	FC1G-690-720	FC1-BER-6		
8"	FC1G-800	FC1-RER-8	FC1-CS-8	FBN-58-8
	FC1G-816-840	FC1-RER-8		
	FC1G-863-905	FC1-RER-8		
	FC1G-905-940	FC1-BER-8		
10"	FC1G-1020-1050	FC1-RER-10	FC1-CS-10	FBN-58-9
	FC1G-1075	FC1-RER-10		
	FC1G-1110-1146	FC1-BER-10		
12"	FC1G-1224-1250	FC1-RER-12	FC1-CS-12	FBN-58-9
	FC1G-1275	FC1-RER-12		
	FC1G-1320-1356	FC1-BER-12		

Caution: Restrain if necessary to provide thrust resistance.
Flexible couplings do not prevent axial pipe movement.

Ford Extended Length Couplings

Style FC1-L12

ANSI/NSF Standard 61
see page M-3



Suggested uses for Ford FC1-L12 Couplings include water main repair, joining of plain end pipe, valve and hydrant installation, and flexible joint installation at critical areas of water main stress.

The FC1 Couplings are constructed entirely of ductile iron components permitting a strong, durable connection.

Only the FC1-L12 offers one gasket and end ring that fits all PVC and ductile iron pipe in the most popular sizes: 4" and 6", with 12" center sleeve length. Gasket ranges are embossed on each gasket for easy identification. End rings are color coded to match the color embossed on each gasket.

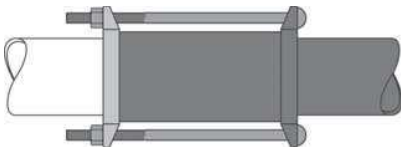
Style FC1-L12 for Cast, Ductile Iron or PVC Pipe

NOM. PIPE SIZE	CATALOG NUMBER PREFIX	GASKET RANGE		END RING COLOR CODE	BY	GASKET RANGE		END RING COLOR CODE	CATALOG NUMBER SUFFIX	CENTER SLEEVE LENGTH	NUMBER OF BOLTS	APPROX. WEIGHT LBS
		1ST. HALF CAT. No.	2ND HALF CAT. No.			1ST. HALF CAT. No.	2ND HALF CAT. No.					
4"	FC1-	4.00 — 4.00	4.00	Red	X	4.00 — 4.00	4.00	Red	-L12	12"	3	29
		4.50 — 4.80	4.80	Red		4.50 — 4.80	4.80	Red				
		4.80 — 5.10	5.10	Black		4.80 — 5.10	5.10	Black				
6"	FC1-	6.00 — 6.00	6.00	Red	X	6.00 — 6.00	6.00	Red	-L12	12"	4	42
		6.30 — 6.30	6.30	Red		6.30 — 6.30	6.30	Red				
		6.63 — 6.90	6.90	Red		6.63 — 6.90	6.90	Red				
		6.90 — 7.20	7.20	Black		6.90 — 7.20	7.20	Black				

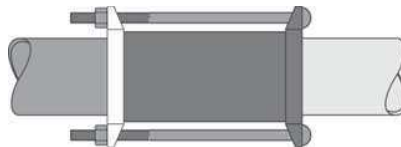
To Order: Locate the gasket range that accommodates your pipe O.D. for both pipe ends. Use the top range of each gasket size to determine the part number. For example, to connect pipe with an O.D. of 6.63 to a pipe with an O.D. of 7.10, the catalog number is FC1-690-720-L12.

Options: **SH** Standard coated coupling with Type 304 stainless steel nuts and bolts. Add "-SH" to the catalog number.
ESH Epoxy coated coupling with Type 304 stainless steel nuts and bolts. Add "-ESH" to the catalog number.
BBN Blue fluorocarbon coating on HSLA nuts and bolts. Add "-BBN" to catalog number.
N NBR (Buna-N) gasket, standard coated coupling and standard alloy bolts. Add "-N" to the catalog number.
EPDM EPDM gasket. Add "-EPDM" to the catalog number.
 (Contact factory for Type 316 stainless steel nuts and bolts.)

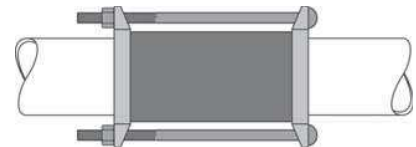
Example: FC1-690-720-L12-ESH is an FC1 coupling with epoxy coating and stainless steel nuts and bolts with 12" center sleeve.



Steel Size PVC x Ductile Iron



A/C x C900 PVC



Steel Size PVC x Steel Size PVC

Component Parts for Style FC1-L12 Extended Length Couplings

NOM. PIPE SIZE	GASKET CAT. No.	END RING CAT. No.	CENTER SLEEVE CAT. No.	BOLT AND NUT CAT. No.
4"	FC1G-400	FC1-RER-4	FC1-CS-4-L12	FBN-58-155
	FC1G-450-480	FC1-RER-4		
	FC1G-480-510	FC1-BER-4		
6"	FC1G-600	FC1-RER-6	FC1-CS-6-L12	FBN-58-155
	FC1G-630	FC1-RER-6		
	FC1G-663-690	FC1-RER-6		
	FC1G-690-720	FC1-BER-6		

Caution: Restrain if necessary to provide thrust resistance.
Flexible couplings do not prevent axial pipe movement.