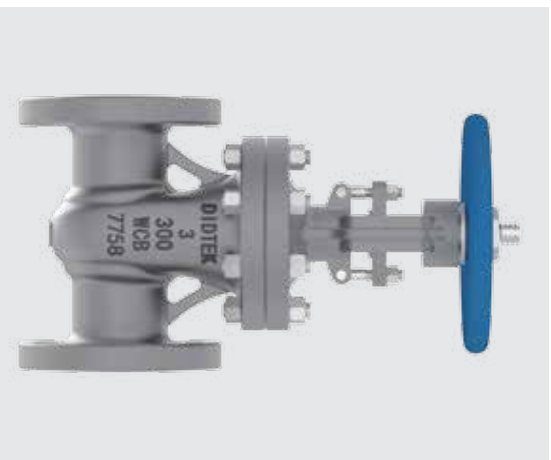


## Category Gate Valve - API 600-Specification



## Cast Steel Gate Valve

### Figure:DIDTEKCSGV

Didtek Cast steel Gate Valves are manufactured to the latest edition of API Standard 600 and tested to API Standard 598.

#### Application & Function:

Didtek Cast steel Gate valves are primarily used for stop valves fully opened or fully closed. They are not normally considered for throttling purposes, but more for slurries, viscous fluids, etc. Gate valves are characterized by a traveling wedge, which is moved with the operation of the stem nut. The wedge travels perpendicular to the direction of the flow. Gate valves usually have a minimum pressure drop when fully open, provide tight shut-off when fully closed, and remain relatively free of contamination buildup.

#### Accessories:

Accessories such as gear operators, actuators, bypasses, locking devices, chain wheels, extended stems and bonnets for cryogenic service and many others are available to meet the customers' requirements.

#### Applicable Standards:

- Gate valve, API600
- Steel Valves, ASME B16.34
- Face to face ASME B16.10
- End Flanges ASME B16.5/ASME B16.47
- Buttwelding ends ASME B16.25
- Inspection and test API 598

#### Pressure Range:

- ASME CL, 150, 300, 600, 900, 1500, 2500

#### Temperature Range:

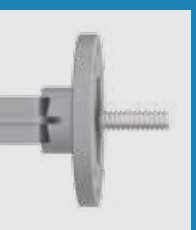
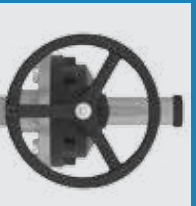
- -50 °C ~650 °C

#### Size Range:

- 2" ~36"



- Engineered for optimum control of fugitive emissions leakage to atmosphere.
- Polished valve stem and reduced diametrical tolerances ensure low fugitive emissions.
- Backseat relieves back pressure on the stem packing when fully seated.
- Welding Seating Ring
- API Trim #8 and #5 for different medium and temperature.
- Seat Ring has Stellite and 13Cr Overlay that is ground and lapped.
- Flexible wedge compensates for seat face distortion.



1/4" and above (2-Pe-Yoke)

Gear Operator Available for any size

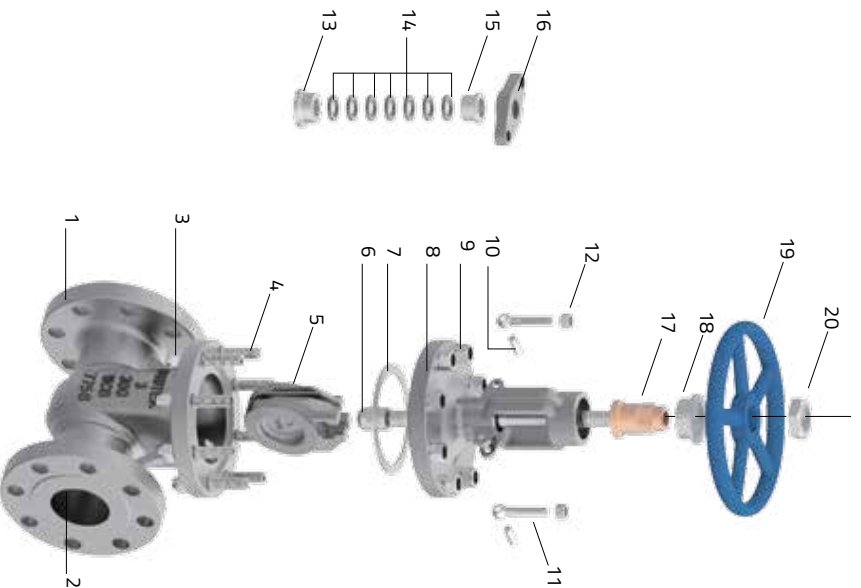
ISO 9210 Warning Part for Actuator



#### Design Description:

- Outside Screw and York
- Bolted Bonnet and Pressure Seal
- Flexible wedge, fully guided
- Welding seat rings or Renewable seat rings
- Rising stem and non-rising stem
- Available with gear operator
- Flange Ends
- Buttwelding Ends

Category Gate Valve - API 600 - 3D Draw And Materials

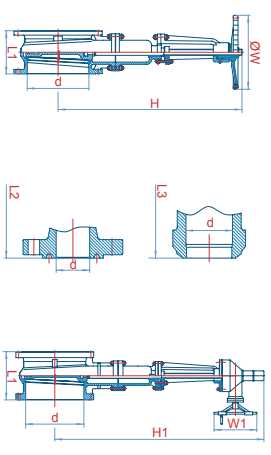


Parts name	Part Name	Carbon Steel to ASTM		Alloy Steel to ASTM			Stainless Steel to ASTM			Parts name		
1	Body	A216 WCB	A352 LCB	A217 WC1	A217 WC6	A217 WC9	A217 C5	A351 CF8	A351 CF8M	A351CF3	A351CF3M	1
2	Seat	A105+13C	A105+304		F11/F22+STL			304	316	304L	316L	2
3	Nuts	A194 2H	A194 4	A194 4	A194 4	A194 4	A194 4	A194 8	A194 8M	A194 8	A194 8M	3
4	Bolts	A193 B7	A320 L7	A193 B16	A193 B16	A193 B16	A193 B16	A193 B8	A193 B8M	A193 B8	A193 B8M	4
5	Disc	A216 WCB+13C	A352 LCB+304	A217 WC1+STL	A217 WCB+STL	A217 WCB+STL	A217 CS+STL	A351 CF8 CF8M	A351 CF8M	A351 CF3 CF3M	A351 CF3M	5
6	Stem	A182 F6a	A182 F6a	A182 F6a	A182 F6a	A182 F6a	A182 F6a	F304	F316	F304L	F316L	6
7	Gasket			SS Spiral Wound W/graphite,or SS Spiral Wound W/PTFE,or Reinforced PTFE								7
8	Bonnet	A216 WCB	A352 LCB	A217 WC1	A217 WC6	A217 WC9	A217 C5	A351 CF8 CF8M	A351 CF8M	A351CF3	A351CF3M	8
9	Nuts	A194 2H	A194 4	A194 4	A194 4	A194 4	A194 4	A194 8	A194 8M	A194 8	A194 8M	9
10	Gland Eyebolt Pin			A29 1035					A276 304			10
11	Eyebolt	A193 B7	A320 L7	A193 B16	A193 B16	A193 B16	A193 B16	A193 B8	A193 B8M	A193 B8	A193 B8M	11
12	Nuts	A194 2H	A194 4	A194 4	A194 4	A194 4	A194 4	A194 8	A194 8M	A194 8	A194 8M	12
13	Backseat Bushing	A182 F6a	A182 F6a	A182 F6a	A182 F6a	A182 F6a	A182 F6a	F304	F316	F304L	F316L	13
14	Packing			Braided graphite,or Die-formed graphite ring or PTFE								14
15	Gland	A182 F6a	A182 F6a	A182 F6a	A182 F6a	A182 F6a	A182 F6a	A182 F304	A182 F316	A182 F304L	A182 F316L	15
16	Gland Flange	A216 WCB	A352 LCB	A217 WC1	A217 WC6	A217 WC9	A217 C5	A351 CF8 CF8M	A351 CF8M	A351 CF3 CF3M	A351 CF3M	16
17	Stem Nut			Copper alloy or A439 D2								17
18	Yoke Cap	AISI 1045	AISI 1045	AISI 1045	AISI 1045	AISI 1045	AISI 1045	A351 CF8	A351 CF8M	A351 CF3	A351 CF3M	18
19	Hand wheel			Ductile iron /walleable iron								19
20	H/W Lock Nut			Carbon Steel					Stainless Steel			20

Category Gate Valve - API 600 - Gate Valve Picture

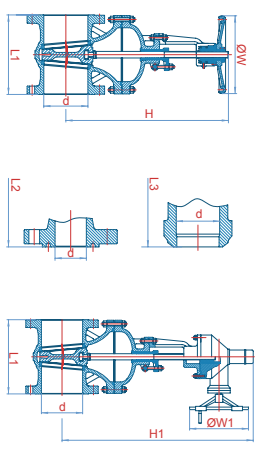


Category Gate Valve - API 600 - Table Of Available Dimensions



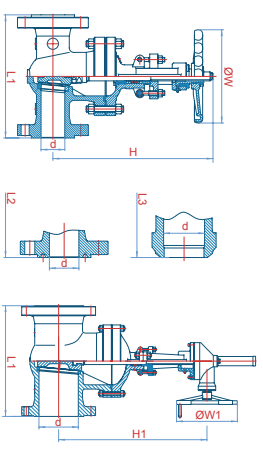
Valve Size		2"	2-1/2"	3"	4"	6"	8"	10"	12"	14"	16"	18"	20"	24"	26"	28"	30"	32"	34"	36"
Face to Face	L1:RF	178	190	203	229	267	292	330	356	381	406	432	457	508	559	610	610	711	711	711
Face to Face	L2:RTJ	191	203	216	241	282	305	343	368	394	419	445	470	521	-	-	-	-	-	-
Face to Face	L3:BW	216	241	282	305	403	419	457	502	572	610	660	711	813	864	914	914	965	1016	1016
Valve Bore(d)		50	63	76	100	150	200	250	300	336	387	438	488	590	633	684	735	779	830	874
Valve Height(H)		340	365	410	485	595	755	895	1040	1145	1333	1420	1635	1862	-	-	-	-	-	-
Handwheel Diameter(W)		200	200	250	280	300	360	400	450	500	500	600	700	800	-	-	-	-	-	-
Handwheel Diameter(W1)		-	-	-	-	310	310	310	460	460	460	460	530	530	530	530	600	600	600	600
Handwheel Diameter(W1)	Handwheel	20	23	36	54	82	136	196	299	381	566	608	827	1202	-	-	-	-	-	-
Handwheel Diameter(W1)	Gear	-	-	-	-	104	150	215	315	451	597	651	863	1357	1550	1880	2300	2550	2950	3390
Weight(kg)		-	-	-	-	104	150	215	315	451	597	651	863	1357	1550	1880	2300	2550	2950	3390

150LB



Valve Size		2"	2-1/2"	3"	4"	6"	8"	10"	12"	14"	16"	18"	20"	24"	26"	28"	30"	32"	34"	36"
Face to Face	L1:RF	216	241	283	305	403	419	457	502	762	838	914	991	1143	1245	1346	1397	1524	1626	1727
Face to Face	L2:RTJ	232	257	298	321	419	435	473	518	778	854	930	1010	1165	1270	1372	1422	1553	1654	1756
Face to Face	L3:BW	216	241	283	305	403	419	457	502	762	838	914	991	1143	1245	1346	1397	1524	1626	1727
Valve Bore (d)		50	63	76	100	150	200	250	300	336	387	431	482	584	633	684	735	779	830	874
Valve Height(H)		364	385	460	540	649	798	940	1129	1195	1340	1503	1625	1965	-	-	-	-	-	-
Valve Height(H-1)		-	-	-	650	835	1030	1255	1460	1585	1830	2000	2175	2620	2850	3080	3180	3300	3550	3760
Handwheel Diameter(W)		200	200	250	280	350	400	450	500	600	600	650	750	900	-	-	-	-	-	-
Handwheel Diameter(W1)		-	-	-	310	310	310	460	460	460	460	460	530	530	530	600	600	600	600	600
Handwheel Diameter(W1)	Handwheel	26	36	55	67	147	147	228	332	512	715	850	1100	1300	2200	-	-	-	-	-
Handwheel Diameter(W1)	Gear	-	-	-	100	186	235	416	502	756	965	1224	1400	2385	3000	3300	3550	4400	5200	6050
Weight(kg)		-	-	-	100	186	235	416	502	756	965	1224	1400	2385	3000	3300	3550	4400	5200	6050

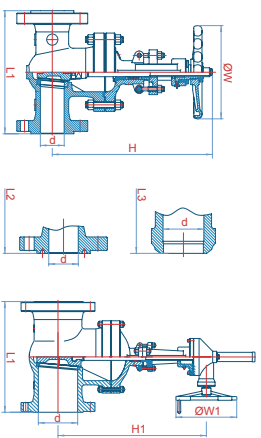
300LB



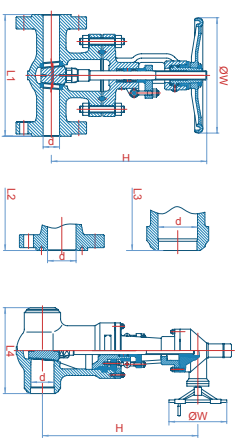
Valve Size		2"	2-1/2"	3"	4"	6"	8"	10"	12"	14"	16"	18"	20"	24"
Face to Face	L1:RF	292	330	356	432	559	660	838	889	991	1092	1194	1397	
Face to Face	L2:RTJ	295	333	359	435	562	664	841	892	994	1095	1200	1407	
Face to Face	L3:BW	292	330	356	432	559	660	838	889	991	1092	1194	1397	
Valve Bore (d)		50	63	76	100	150	199	247	298	326	374	419	463	
Valve Height(H)		380	420	500	575	750	850	1005	1130	1270	1365	-	-	
Valve Height(H-1)		-	-	585	695	900	1110	1300	1650	1750	1900	2020	2172	
Handwheel Diameter(W)		200	250	280	300	450	500	650	700	900	900	-	-	
Handwheel Diameter(W1)		-	-	310	310	460	460	460	460	530	530	600	600	
Handwheel Diameter(W1)	Handwheel	37	50	82	142	245	460	682	932	1177	1513	-	-	
Handwheel Diameter(W1)	Gear	-	-	87	227	286	472	657	893	1318	1720	1980	2460	
Weight(kg)		-	-	87	227	286	472	657	893	1318	1720	1980	2460	
Weight(kg)		-	-	87	227	286	472	657	893	1318	1720	1980	2460	

600LB

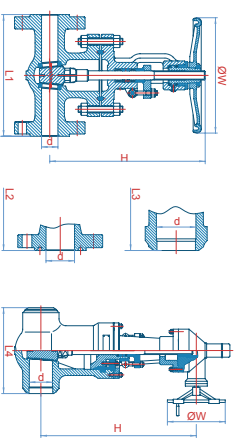


**Category Gate Valves - API 600 - Table Of Available Dimensions**
**900LB**


Valve Size	2"		2-1/2"		3"		4"		6"		8"		10"		12"		14"		16"		18"		20"	
	50mm	65mm	80mm	100mm	150mm	200mm	250mm	300mm	350mm	400mm	450mm	500mm	550mm	600mm	650mm	700mm	750mm	800mm	850mm	900mm	950mm	1000mm	1050mm	1100mm
Face to Face	L1:RF 368	L1:RF 419	L1:RF 381	L1:RF 457	L1:RF 610	L1:RF 737	L1:RF 838	L1:RF 965	L1:RF 1029	L1:RF 1130	L1:RF 1219	L1:RF 1321	L1:RF 1445	L1:RF 1559	L1:RF 1673	L1:RF 1787	L1:RF 1901	L1:RF 2015	L1:RF 2129	L1:RF 2243	L1:RF 2357	L1:RF 2471	L1:RF 2585	L1:RF 2699
Valve Bore (d)	L2:RTI 371	L2:RTI 422	L2:RTI 384	L2:RTI 460	L2:RTI 613	L2:RTI 740	L2:RTI 841	L2:RTI 968	L2:RTI 1038	L2:RTI 1140	L2:RTI 1232	L2:RTI 1334	L2:RTI 1444	L2:RTI 1554	L2:RTI 1664	L2:RTI 1774	L2:RTI 1884	L2:RTI 1994	L2:RTI 2104	L2:RTI 2214	L2:RTI 2324	L2:RTI 2434	L2:RTI 2544	L2:RTI 2654
Valve Height(H)	L3:BW 47	L3:BW 57	L3:BW 72	L3:BW 98	L3:BW 146	L3:BW 190	L3:BW 238	L3:BW 282	L3:BW 311	L3:BW 355	L3:BW 400	L3:BW 444	L3:BW 488	L3:BW 532	L3:BW 576	L3:BW 620	L3:BW 664	L3:BW 708	L3:BW 752	L3:BW 796	L3:BW 840	L3:BW 884	L3:BW 928	L3:BW 972
Handwheel Diameter(W)	-	-	-	-	-	-	-	-	-	-	-	-	-	-	-	-	-	-	-	-	-	-	-	-
Handwheel Weight(kg)	-	-	-	-	-	-	-	-	-	-	-	-	-	-	-	-	-	-	-	-	-	-	-	-

**1500LB**


Valve Size	2"		2-1/2"		3"		4"		6"		8"		10"		12"		14"		16"		18"		20"	
	50mm	65mm	80mm	100mm	150mm	200mm	250mm	300mm	350mm	400mm	450mm	500mm	550mm	600mm	650mm	700mm	750mm	800mm	850mm	900mm	950mm	1000mm	1050mm	1100mm
Face to Face	L1:RF 368	L1:RF 419	L1:RF 470	L1:RF 546	L1:RF 705	L1:RF 832	L1:RF 991	L1:RF 1130	L1:RF 1257	L1:RF 1384	L1:RF 1511	L1:RF 1638	L1:RF 1765	L1:RF 1892	L1:RF 2019	L1:RF 2146	L1:RF 2273	L1:RF 2400	L1:RF 2527	L1:RF 2654	L1:RF 2781	L1:RF 2908	L1:RF 3035	L1:RF 3162
Valve Bore (d)	L2:RTI 371	L2:RTI 422	L2:RTI 473	L2:RTI 549	L2:RTI 711	L2:RTI 841	L2:RTI 1000	L2:RTI 1146	L2:RTI 1276	L2:RTI 1407	L2:RTI 1537	L2:RTI 1667	L2:RTI 1797	L2:RTI 1927	L2:RTI 2057	L2:RTI 2187	L2:RTI 2317	L2:RTI 2447	L2:RTI 2577	L2:RTI 2707	L2:RTI 2837	L2:RTI 2967	L2:RTI 3097	L2:RTI 3227
Valve Height(H)	L3:BW(P5B) 368	L3:BW(P5B) 419	L3:BW(P5B) 470	L3:BW(P5B) 546	L3:BW(P5B) 705	L3:BW(P5B) 832	L3:BW(P5B) 991	L3:BW(P5B) 1130	L3:BW(P5B) 1257	L3:BW(P5B) 1384	L3:BW(P5B) 1511	L3:BW(P5B) 1638	L3:BW(P5B) 1765	L3:BW(P5B) 1892	L3:BW(P5B) 2019	L3:BW(P5B) 2146	L3:BW(P5B) 2273	L3:BW(P5B) 2400	L3:BW(P5B) 2527	L3:BW(P5B) 2654	L3:BW(P5B) 2781	L3:BW(P5B) 2908	L3:BW(P5B) 3035	L3:BW(P5B) 3162
Handwheel Diameter(W)	-	-	-	-	-	-	-	-	-	-	-	-	-	-	-	-	-	-	-	-	-	-	-	-
Handwheel Weight(kg)	-	-	-	-	-	-	-	-	-	-	-	-	-	-	-	-	-	-	-	-	-	-	-	-

**2500LB**


Valve Size	2"		2-1/2"		3"		4"		6"		8"		10"		12"	
	50mm	65mm	80mm	100mm	150mm	200mm	250mm	300mm	350mm	400mm	450mm	500mm	550mm	600mm	650mm	700mm
Face to Face	L1:RF 451	L1:RF 508	L1:RF 578	L1:RF 673	L1:RF 873	L1:RF 1022	L1:RF 1194	L1:RF 1366	L1:RF 1538	L1:RF 1710	L1:RF 1882	L1:RF 2054	L1:RF 2226	L1:RF 2398	L1:RF 2570	L1:RF 2742
Valve Bore (d)	L2:RTI 454	L2:RTI 514	L2:RTI 584	L2:RTI 683	L2:RTI 883	L2:RTI 1032	L2:RTI 1204	L2:RTI 1376	L2:RTI 1548	L2:RTI 1720	L2:RTI 1892	L2:RTI 2064	L2:RTI 2236	L2:RTI 2408	L2:RTI 2580	L2:RTI 2752
Valve Height(H)	L3:BW(P5B) 279	L3:BW(P5B) 330	L3:BW(P5B) 368	L3:BW(P5B) 457	L3:BW(P5B) 610	L3:BW(P5B) 762	L3:BW(P5B) 914	L3:BW(P5B) 1066	L3:BW(P5B) 1218	L3:BW(P5B) 1370	L3:BW(P5B) 1522	L3:BW(P5B) 1674	L3:BW(P5B) 1826	L3:BW(P5B) 1978	L3:BW(P5B) 2130	L3:BW(P5B) 2282
Handwheel Diameter(W)	-	-	-	-	-	-	-	-	-	-	-	-	-	-	-	
Handwheel Weight(kg)	-	-	-	-	-	-	-	-	-	-	-	-	-	-	-	