

## Category Globe Valve - BS1873-Specification



## Cast Steel Globe Valve

### Figure:DIDTEKCSGLV

Didtek Cast steel Globe Valves are manufactured to the latest edition of BS1873 and tested to API Standard 598.

#### Application & Function:

Didtek Cast steel globe valve is used for throttling flow control. Shut off is accomplished by moving the disc against the flow stream rather than across it as in the case with a gate valve. The flow pattern through a globe valve involves changes in direction, resulting in greater resistance to flow, causing high pressure drop. Didtek Cast steel Globe valve is an excellent valve to use for on-off service, also is highly suited for frequent cycling and control of fluids anywhere in amount or volume between the open and closed positions.

Didtek Cast steel globe valve must be installed in the proper relation to the media flow as indicated by the flow direction arrow marked on the valve body. This valve is considered uni-directional and must be installed with the pressure side or inlet under the seat.

#### Accessories:

Accessories such as gear operators, actuators, bypasses, locking

devices, chain wheels, extended stems and bonnets for cryogenic service and many others are available to meet the customers' requirements.

#### Applicable Standards:

- Globe valve, BS1873
- Steel Valves, ASME B16.34
- Face to face ASME B16.10
- End Flanges ASME B16.5/ASME B16.47
- Butt welding ends ASME B16.25
- Inspection and test API 598

#### Pressure Range

- ASME CL, 150, 300, 600, 900, 1500, 2500

#### Temperature Range:

- -50 °C ~ -650 °C

#### Size Range:

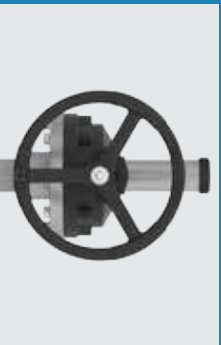
- 2" ~ 24"



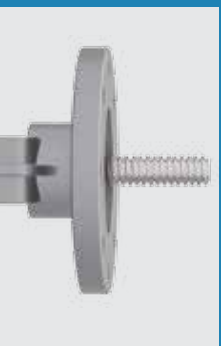
- Engineered for optimum control of fugitive emissions leakage to atmosphere.
- Polished valve stem and reduced diametrical tolerances ensure low fugitive emissions.
- Backseat relieves back pressure on the stem packing when fully seated.



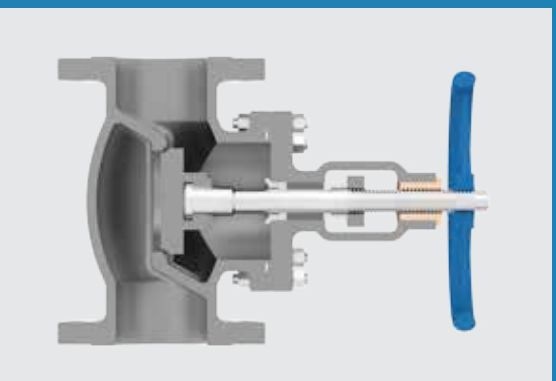
- Contoured "Conical" disc design for excellent throttling control.
- The Conical disc integrally guided for accurate sealing on the seat.



Gear Operator Available for any size

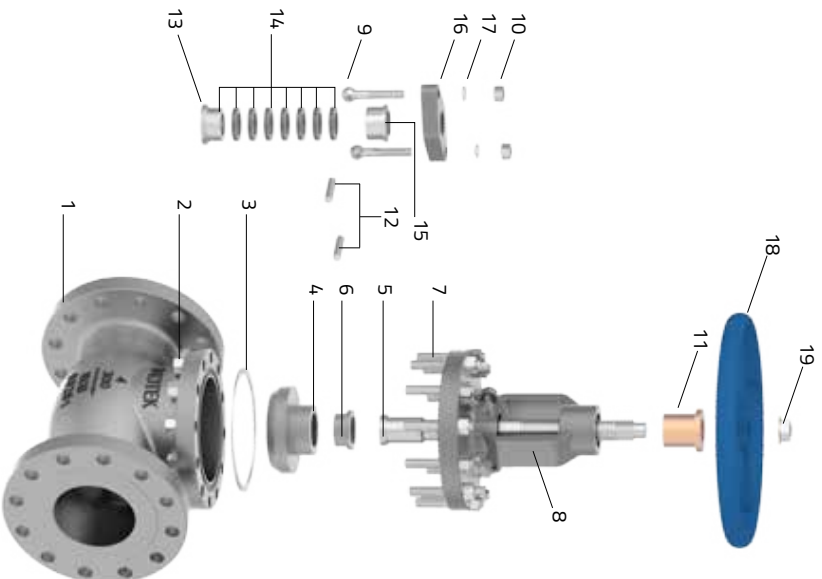


ISO 5211 Mounting Pad for Actuator



#### Design Description:

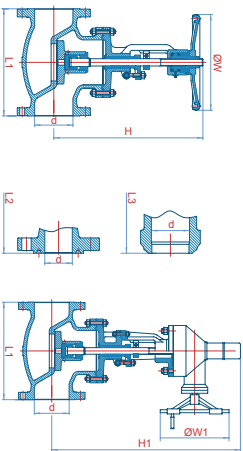
- Outside Screw and York
- Bolted Bonnet and Pressure Seal
- Flexible wedge, fully guided
- Rising stem and non-rising stem
- Available with gear operator
- Flange Ends
- Buttwelding Ends
- Seat welded stellite or 13% Cr

**Category Globe Valve - BS1873 - 3D Draw And Materials**


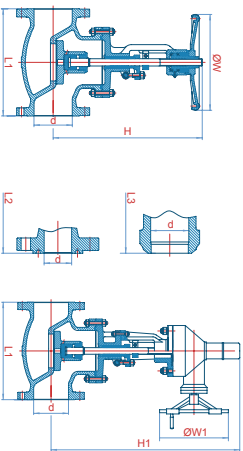
Parts name	Part Name	Carbon Steel to ASTM	Alloy Steel to ASTM				Stainless Steel to ASTM				Parts name	
1	Body	A216 WCB+13Cr	A352 LCB+304	A217 WC1+STL	A217 WC6+STL	A217 WC9+STL	A217 C5+STL	A351 CF8	A351 CF8M	A351CF3	A351CF3M	1
2	Nuts	A194 2H	A194 4	A194 2H	A194 4	A194 4	A194 4	A194 8	A194 8M	A194 8	A194 8M	2
3	Gasket		SS Spiral Wound W/graphite or SS Spiral Wound W/PTFE or Reinforced PTFE									3
4	Disc	A216 WCB+13Cr	A352 LCB+304	A217 WC1+STL	A217 WC6+STL	A217 WC9+STL	A217 C5+STL	A351 CF8	A351 CF8M	A351 CF3	A351 CF3M	4
5	Stem	A182 F6a	A182 F6a	A182 F6a	A182 F6a	A182 F6a	A182 F6a	A182 F304	A182 F316	A182 F304L	A182 F316L	5
6	Disc Nut	ASTM A105	ASTM A105	ASTM A105	ASTM A105	ASTM A105	ASTM A105	A182 F304	A182 F304	A182 F304	A182 F304	6
7	Bolts	A193 B7	A320 L7	A193 B16	A193 B16	A193 B16	A193 B16	A193 B8	A193 B8M	A193 B8	A193 B8M	7
8	Bonnet	A216 WCB	A352 LCB	A217 WC1	A217 WC6	A217 WC9	A217 C5	A351 CF8	A351 CF8M	A351CF3	A351CF3M	8
9	Eyebolt	A193 B7	A320 L7	A193 B16	A193 B16	A193 B16	A193 B16	A193 B8	A193 B8M	A193 B8	A193 B8M	9
10	Nuts	A194 2H	A194 4	A194 4	A194 4	A194 4	A194 4	A194 8	A194 8M	A194 8	A194 8M	10
11	Stem Nut		Copper alloy or A439 D2									11
12	Gland Eyebolt Pin		A29 1035				A276 304				12	
13	Backseat Bushing	A182 F6a	A182 F6a	A182 F6a	A182 F6a	A182 F6a	A182 F6a	A182 F304	A182 F316	A182 F304L	A182 F316L	13
14	Packing		Braided graphite or Die-formed graphite ring or PTFE									14
15	Gland	A182 F6a	A182 F6a	A182 F6a	A182 F6a	A182 F6a	A182 F6a	A182 F304	A182 F316	A182 F304L	A182 F316L	15
16	Gland Flange	A216 WCB	A352 LCB	A217 WC1	A217 WC6	A217 WC9	A217 C5	A351 CF8	A351 CF8M	A351 CF3	A351 CF3M	16
17	Gasket		AISI 1025									17
18	Hand wheel		Ductile iron /Malleable Iron									18
19	Lock Nut		Carbon Steel				Stainless Steel				19	

Category Globe Valve - BS1873 - Globe Valve Picture

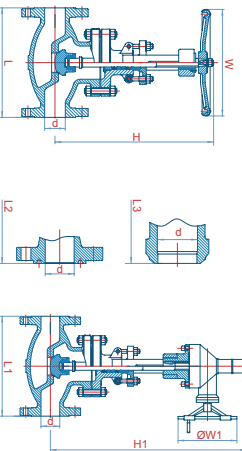


**Category Globe Valve - BS1873 - Table Of Available Dimensions**

**150LB**

Valve Size	2"		2-1/2"		3"		4"		6"		8"		10"		12"		14"		16"		18"		20"		24"	
	50mm	65mm	80mm	100mm	150mm	200mm	250mm	300mm	350mm	400mm	450mm	500mm	600mm	650mm	700mm	750mm	800mm	850mm	900mm	950mm	1000mm	1050mm	1100mm	1150mm	1200mm	1250mm
Face to Face	L1:RF 203	L2:RTJ 216	L3:BW 203	216	229	254	292	305	419	406	495	622	698	787	800	927	991	978	978	978	978	978	978	978	978	978
Valve Bore (d)	51	64	76	102	152	203	254	305	373	400	400	400	400	400	400	400	400	400	400	400	400	400	400	400	400	400
Valve Height(H)	328	360	373	400	528	680	775	880	880	880	880	880	880	880	880	880	880	880	880	880	880	880	880	880	880	880
Handwheel Diameter(W)	200	250	280	300	350	400	450	500	556	528	528	528	528	528	528	528	528	528	528	528	528	528	528	528	528	528
Handwheel Diameter(W1)	-	-	-	-	310	310	310	310	310	310	310	310	310	310	310	310	310	310	310	310	310	310	310	310	310	310
Handwheel	18	26	43	54	95	160	299	373	114	160	158	259	378	640	920	1450	1650	2200								
Weight(kg)																										
Gear																										


**300LB**

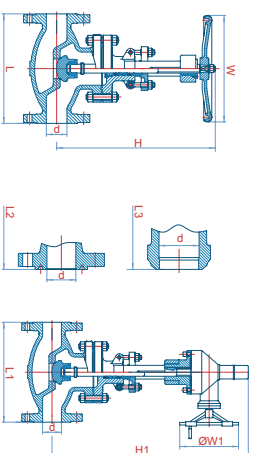
Valve Size	2"		2-1/2"		3"		4"		6"		8"		10"		12"		14"		16"		18"		20"		
	50mm	65mm	80mm	100mm	150mm	200mm	250mm	300mm	350mm	400mm	450mm	500mm	600mm	650mm	700mm	750mm	800mm	850mm	900mm	950mm	1000mm	1050mm	1100mm	1150mm	
Face to Face	L1:RF 267	L2:RTJ 283	L3:BW 267	292	308	333	371	460	444	559	622	711	838	864	977	1016									
Valve Bore (d)	51	64	76	102	152	203	254	305	373	400	400	400	400	400	400	400	400	400	400	400	400	400	400	400	400
Valve Height(H)	346	390	403	474	635	870	950	1030	1155	1155	1155	1155	1155	1155	1155	1155	1155	1155	1155	1155	1155	1155	1155	1155	1155
Handwheel Diameter(W)	200	250	280	350	450	550	600	600	600	600	600	600	600	600	600	600	600	600	600	600	600	600	600	600	600
Handwheel Diameter(W1)	-	-	-	-	310	310	310	310	310	310	310	310	310	310	310	310	310	310	310	310	310	310	310	310	310
Handwheel	29	44	59	87	162	281	355	409	177	281	389	499	635	880	1300	1600	2100								
Weight(kg)																									
Gear																									

**600LB**


Valve Size	2"		2-1/2"		3"		4"		6"		8"		10"		12"		14"		16"		18"				
	50mm	65mm	80mm	100mm	150mm	200mm	250mm	300mm	350mm	400mm	450mm	500mm	600mm	650mm	700mm	750mm	800mm	850mm	900mm	950mm	1000mm	1050mm	1100mm	1150mm	
Face to Face	L1:RF 292	L2:RTJ 295	L3:BW 292	330	333	359	432	435	559	660	787	838	889	991	1092										
Valve Bore (d)	51	64	76	102	152	200	248	305	373	400	400	400	400	400	400	400	400	400	400	400	400	400	400	400	400
Valve Height(H)	360	410	465	545	785	930	1219	1570	1730	1960	1990														
Handwheel Diameter(W)	250	280	280	280	400	550	650	650	650	650	650	650	650	650	650	650	650	650	650	650	650	650	650	650	650
Handwheel Diameter(W1)	-	-	-	-	310	310	310	310	310	310	310	310	310	310	310	310	310	310	310	310	310	310	310	310	310
Handwheel	35	42	66	117	117	263	469	600	600	600	600	600	600	600	600	600	600	600	600	600	600	600	600	600	600
Weight(kg)																									
Gear																									

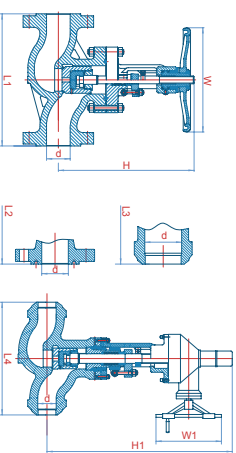
Category Globe Valve - BS1873 - Table Of Available Dimensions

900LB



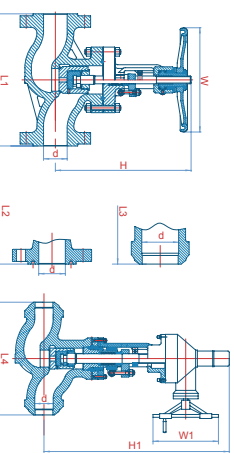
Valve Size	2"	2-1/2"	3"	4"	6"	8"	10"	12"
	50mm	65mm	80mm	100mm	150mm	200mm	250mm	300mm
Face to Face								
L1:RF	368	419	381	457	610	737	838	965
L2:RTJ	371	422	384	460	613	740	841	968
L3:BW	368	419	381	457	610	737	838	965
Valve Bore (d)	48	57	73	98	146	190	238	282
Valve Height(H)	480	520	564	685	950	1050	-	-
Valve Height(H1)	-	-	630	720	1015	1140	1510	1740
Handwheel Diameter(W)	350	350	400	450	650	700	-	-
Handwheel Diameter(W1)	-	-	310	310	460	460	530	600
Handwheel Weight(kg)	55	68	113	179	429	680	-	-
Gear	-	-	128	210	480	750	820	1262

1500LB



Valve Size	2"	2-1/2"	3"	4"	6"	8"	10"	12"
	50mm	65mm	80mm	100mm	150mm	200mm	250mm	300mm
Face to Face								
L2:RTJ	371	422	473	549	711	841	1001	1146
L3:BW(BB)	368	419	470	546	705	832	991	1130
L4:BW(PSB)	216	254	305	406	559	711	864	991
Valve Bore (d)	48	57	70	92	137	178	222	263
Valve Height(H)	505	550	630	808	930	1140	-	-
Valve Height(H1)	-	-	765	890	1020	1230	1625	1840
Handwheel Diameter(W)	350	400	450	460	610	610	-	-
Handwheel Diameter(W1)	-	-	310	310	530	530	600	600
Handwheel Weight(kg)	137	141	261	336	966	1210	-	-
Gear	-	-	320	397	1035	1280	1718	2408

2500LB



Valve Size	2"	2-1/2"	3"	4"	6"	8"	10"
	50mm	65mm	80mm	100mm	150mm	200mm	250mm
Face to Face							
L1:RF	451	508	578	673	914	1022	1270
L2:RTJ	454	514	584	683	927	1035	1292
L3:BW(BB)	451	508	578	673	914	1022	1270
L4:BW(PSB)	279	330	368	457	610	762	914
Valve Bore (d)	38	47	57	73	92	146	184
Valve Height(H)	500	580	680	755	1040	-	-
Valve Height(H1)	-	-	785	865	1040	1240	1520
Handwheel Diameter(W)	400	450	500	600	600	-	-
Handwheel Diameter(W1)	-	-	460	530	600	600	600
Handwheel Weight(kg)	158	-	275	-	-	-	-
Gear	-	-	335	409	966	1210	1450