



# Model RVW10

## ASME HOT WATER SAFETY RELIEF VALVE

(10100 Series)

Job Name:	Contractor:
Job Location:	P.O. Number:
Engineer:	Representative:
Tag:	Wholesale Distributor:

### DESCRIPTION

ASME Section IV capacity certified bronze safety relief valves for protection of hot water heating boilers, systems and similar equipment.

### FEATURES

- ASME Section IV Certified Capacity (20-60psi only)
- 15-60 psig (1.4 – 4.1 bar) Set Pressure @ 250°F (121°C) max
- Corrosion Resistant Construction
- Male or Female NPT inlet
- Optional Satin or Polished Chrome Finish
- MADE IN THE USA

### MATERIALS

Body: ASTM B584 Bronze  
 Nozzle: ASTM B584 Bronze  
 Spring: Stainless Steel  
 Seat: EPDM

### CAPACITY

National Board Capacity Certified

Set Pressure PSIG (bar)	10-100 (1" Outlet) BTU/Hr
20 (1.38)	545,000
25 (1.72)	625,000
30 (2.07)	710,000
35 (2.41)	790,000
40 (2.76)	870,000
45 (3.10)	955,000
50 (3.45)	1,035,000
55 (3.79)	1,115,000
60 (4.14)	1,200,000

### APPROVALS



ASME Section IV Heating Boilers  
 Canadian Registration Number 0G8547.5C



### OPTIONS

#### CONNECTION

- Male NPT Inlet     FNPT Inlet

#### FINISH

- Brass finish  
 Polished chrome finish  
 Satin chrome finish

#### SEAT

- EPDM     Silicone

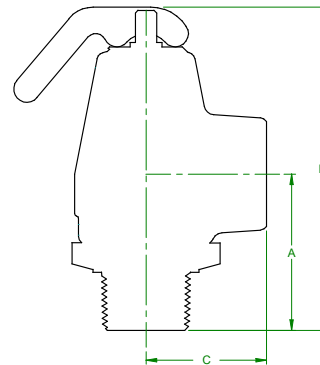
#### SET PRESSURE

(15-60, psig)

### DIMENSIONS

Model No.	Item No.	SIZE	A	B	C
RVW10F	10102	3/4F x 1F	1.50 (38)	3.41 (87)	1.53 (39)
RVW10	10104	3/4M x 1F	1.91 (49)	3.82 (97)	1.53 (39)

All dims in inches (mm)



Conbraco Industries, Inc. 701 Matthews Mint Hill Rd. Matthews NC 28105 USA ; [www.Apollovalves.com](http://www.Apollovalves.com) ; 704-841-6000

This specification is provided for reference only. Conbraco reserves the right to change any portion of this specification without notice and without incurring obligation to make such changes to Conbraco products previously or subsequently sold.