

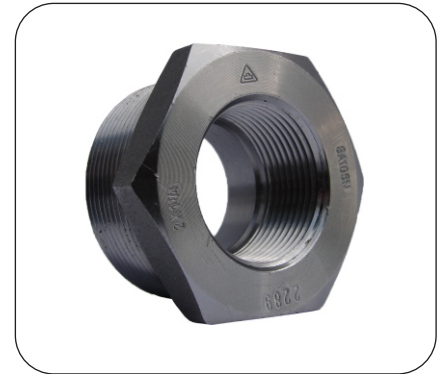


Forged Steel High-Pressure Fittings

HEXAGONAL BUSHING

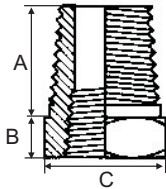
Description

Pressure: 2000Lbs,3000Lbs
 Specification :For use with,Elbow,Tee,Cross,Square plug,
 Hexgean Plug,Nipple,Cap,Coupling,Outlet for thread type .
 Material: Forged Steel
 Size Rate: from 1/8" to 6"
 Standard:.,ASME B 16.11,JIS
 Thread : NPT



- THREADED (ANSI/ASME B1.20.1-1992)
- ASME B16.11-1996

Dimensions and weights



NW	3000 Lbs / 6000 Lbs										
DN	8	10	15	20	25	32	40	50	65	80	100
NPS	1/4"	3/8"	1/2"	3/4"	1"	1 1/4"	1 1/2"	2"	2 1/2"	3"	4"
A	12,5	14,5	17,5	19	20,5	22	24	25,5	30	38	45
B	5	5	5	6,5	6,5	9,5	9,5	11	12,5	17,5	25,5
C	16	17,5	22	27	36,5	46	51	63,5	76	94	118
Kg.	0,009	0,013	0,027	0,05	0,086	0,17	0,16	0,38	0,54	1,17	3,15